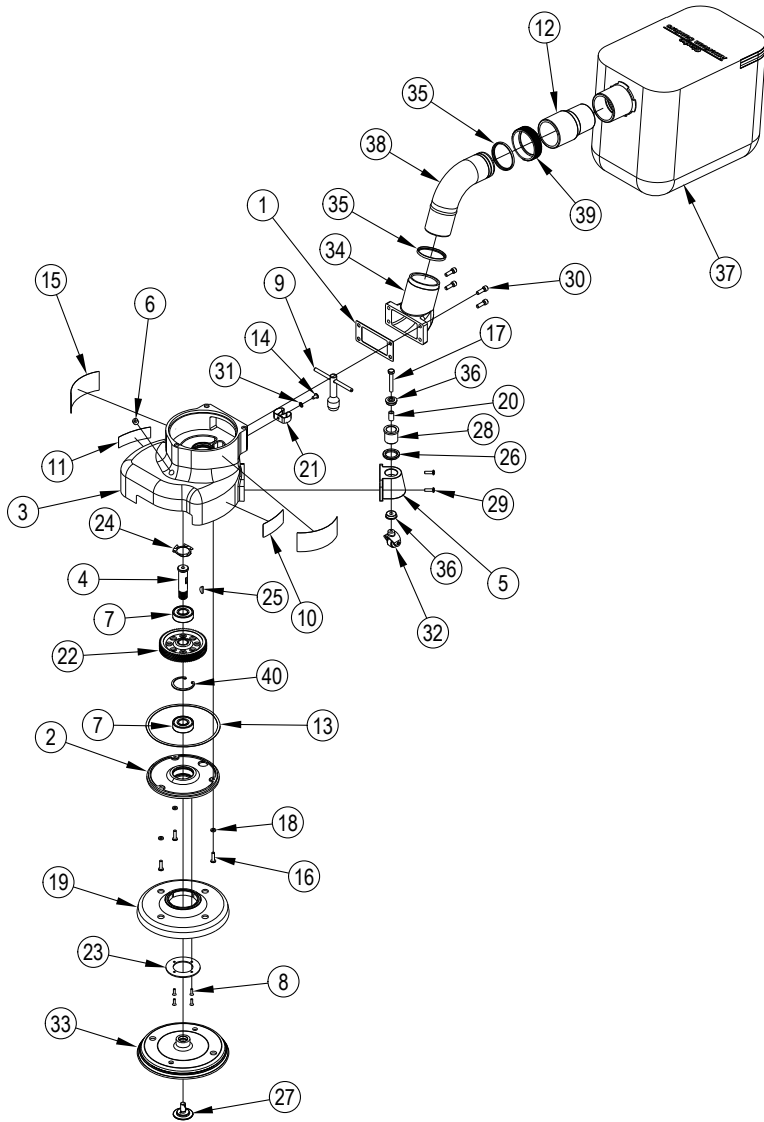


LOWER ASSY

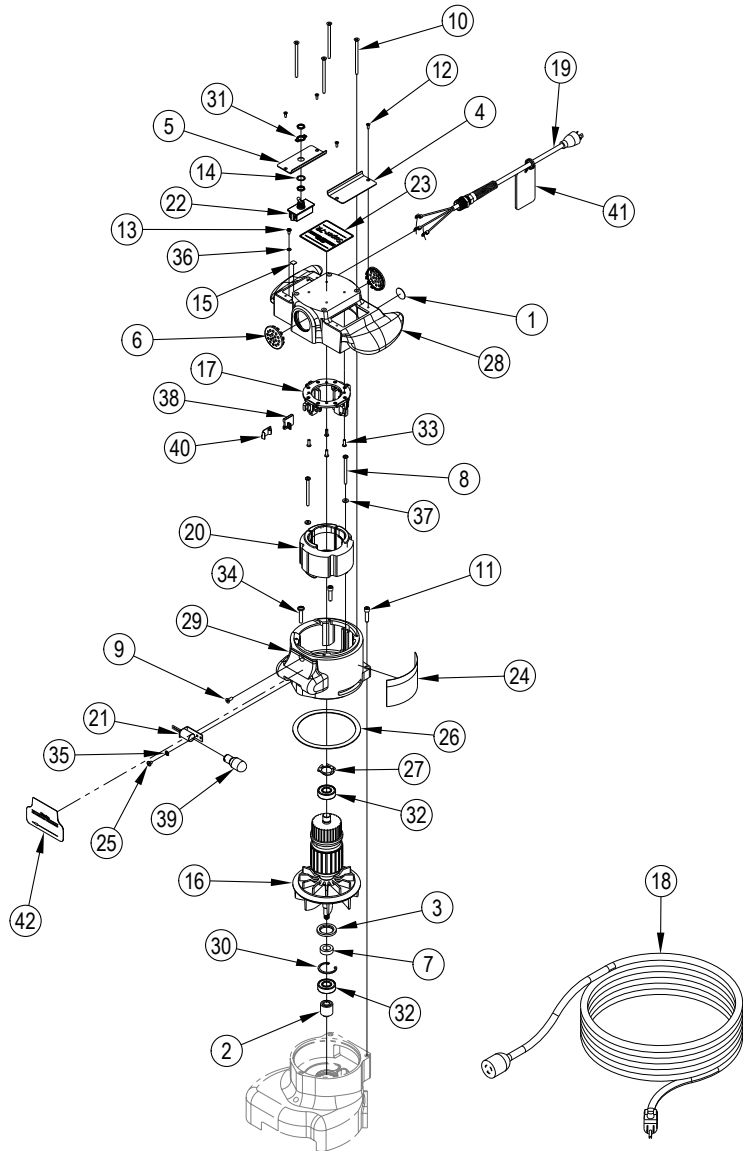


LOWER ASSY

Item	Ref. No.	Qty	Description
1#	293406	1	Gasket-Discharge Pipe
2#	302306	1	Cover Gr Hsg Assy
3#	304204	1	Gear Housing
4#	307702	1	Shaft Drive Gear
5#	310803	2	Bracket-Caster Support
6#	316804	1	Plug Pipe 77e17
7#	902550	2	Bearing Ball-6203
8#	962974	4	Screw 6-32x1/2 Fh Ph
9#	987300	1	Wrench-Paper Clamp Screw
10#	56380216	1	Decal Power Tool Cautionary Ma
11#	56380639	1	Decal-Prop 65 (07013A & 07125A only)
12#	30563A	1	2" X 1.50" Hose Adaptor
13#	34232A	1	Gasket-Gear Case Cover
14#	962987	1	Scr 10-24 X 3/8 Pn *St Typ23
15#	70824A	2	Labelhdr 1.75 X 4 (07013A only)
16#	84808A	3	Screw 10-24 X 3/4 Rd Sz Ph
17#	85702A	2	Scr 1/4 -20x1&3/4 Hx St Cap
18#	87609A	3	Washerseal 10neoprene/Steel
19#	293616	1	Guard, Disc
20#	298215	2	Collar, Spacing
21#	302101	1	Clip, Steel 3/8" To 5/8"
22#	303502	1	Gear Drive Lh
23#	317204	1	Disc Guard Retainer
24#	318303	1	Spring, Bearing Load
25#	915028	1	Key, 1/8 X 5/8 Woodruff
26#	920670	2	Nut, Caster Adj. Lock
27#	960125	1	Clamp, Abrasive S-7R
28#	960130	2	Screw, Swivel Caster
29#	962109	4	Screw, 10-24 X 5/8 Phcr Ss
30#	962289	4	Screw, 1/4-20 X 3/4
31#	980603	2	Washer, #10 Lock External Tooth
32#	10212A	2	Wheel & Yoke Asm
33#	21066A	1	Disc, Sanding
34#	21077A	1	Exhaust Adaptor
35#	30613A	2	Seal, Pipe
36#	50740A	4	Bearing Ball 1/4 X 3/4 Shield
37#	53544B	1	Bag, Edger
38#	61564A	1	Tube, Exhaust
39#	80276A	1	Nut-Slip Joint 2 X 2
40#	L067304	1	Ring Retaining Internal -156
[#]	31407A	1	Super 7R Edger Case
ACCESSORIES			
*#	30666A	2	Wheel & Yoke Urethane Edgers
*#	10827A	1	Exhaust Conversion Kit S-7R
*#	38728A	1	Disc Conv Hook 6-7/8 10ea/BX

[] = Not Shown
 * = Optional, Not Included
 # = Revised or new since last update

UPPER ASSY



UPPER ASSY

Item	Ref. No.	Qty	Description
1#	165106	1	Label-City Of La Approval (07013A & 07125A only)
2#	293514	1	Pinion Armature S7a/R 115/24
3#	297604	1	Oil Seal 92
4#	302309	1	Cover Motor Brush L H
5#	302310	1	Cover Motor Brush R H
6#	306802	2	Plug Vent
7#	308202	1	Spacer Bearing
8#	962211	2	Scr 10-24x2&1/2 Rd P St Mach
9#	962310	1	Scr 10-24x 1/2 Ov P St Mach (07013A & 07125A only)
10#	962404	4	Screw 10-24x3 1/4 Fh St Ph
11#	962454	2	Scr 1/4 -20x1 Sc St Cap
12#	962545	4	Screw 6-32 X 3/8 Flat Head
13#	962550	1	Screw 8-32x 5/16 Rd St Tp23 Ph
14#	980662	1	Washer-Sh 1224-00 Lock
15#	77094A	1	Label Ground Symbol
16#	10101B	1	Armature Asm With Fan S7a/R (07013A & 07125A only)
#	10110A	1	Armature Asm.Super 7R 240V 50 (07098A only)
17#	40130A	1	Holder Asm Brush
18#	40540A	1	Cordset 12-3x40ft 5-15p (07013A only)
#	42234A	1	Cord Set Super 7E (07125A only)
#	40007A	1	Cordset 50FT W/AU1-10P (07098A only)
19#	41960A	1	Cord Interconnecting Super 7 (07013A & 07125A only)
#	41947A	1	Cord Power 14-3 14 240V 7 (07098A only)
20#	42820A	1	Field & Coil Asm 115V (07013A & 07125A only)
#	42819A	1	Field & Coil Asm 240V (07098A only)
21#	46902A	1	Socket Assy (07013A & 07125A only)
22#	47394A	1	Switch-Dpst 16a 125v
23#	70487A	1	Platenname Super 7r
24#	73285A	1	Label-Warning
25#	85393A	1	Screw 10-24 X 1/4 Ph Sz Ph (07013A & 07125A only)
26#	293403	1	Gasket Exhaust Fan Baffle
27#	298306	1	Spring, Bearing Load
28#	302312	1	Cover & Handle Asm Polished
29#	304208	1	Housing & Guard Asm (no light guard on 07098A)
30#	407302	1	Ring Retain
31#	646302	1	Plate-Switch
32#	902567	2	Bearing Balldouble Sealed
33#	962727	4	Screw, 8-32 X 1/2
34#	962988	1	Screw, 1/4-20 X 1 1/4 Phms Ph
35#	980603	1	Washer, #10 Lock External Tooth (07013A & 07125A only)
36#	980621	1	Washer External Tooth Lock
37#	980643	2	Washer 7/16 Od X .036 Thk
38#	40818A	4	Brush, Carbon (07013A & 07125A only)
#	40055A	4	Brush Carbon (07098A only)
39#	40920A	1	Lamp 130v Dc Bayonet (07013A & 07125A only)
40#	50932A	4	Spring, Brush Holder
41#	70175A	1	Tag Warning (07013A & 07125A only)
42#	70946A	1	Plate Name Arrow (07098A only)

= Revised or new since last update

WIRING DIAGRAM

