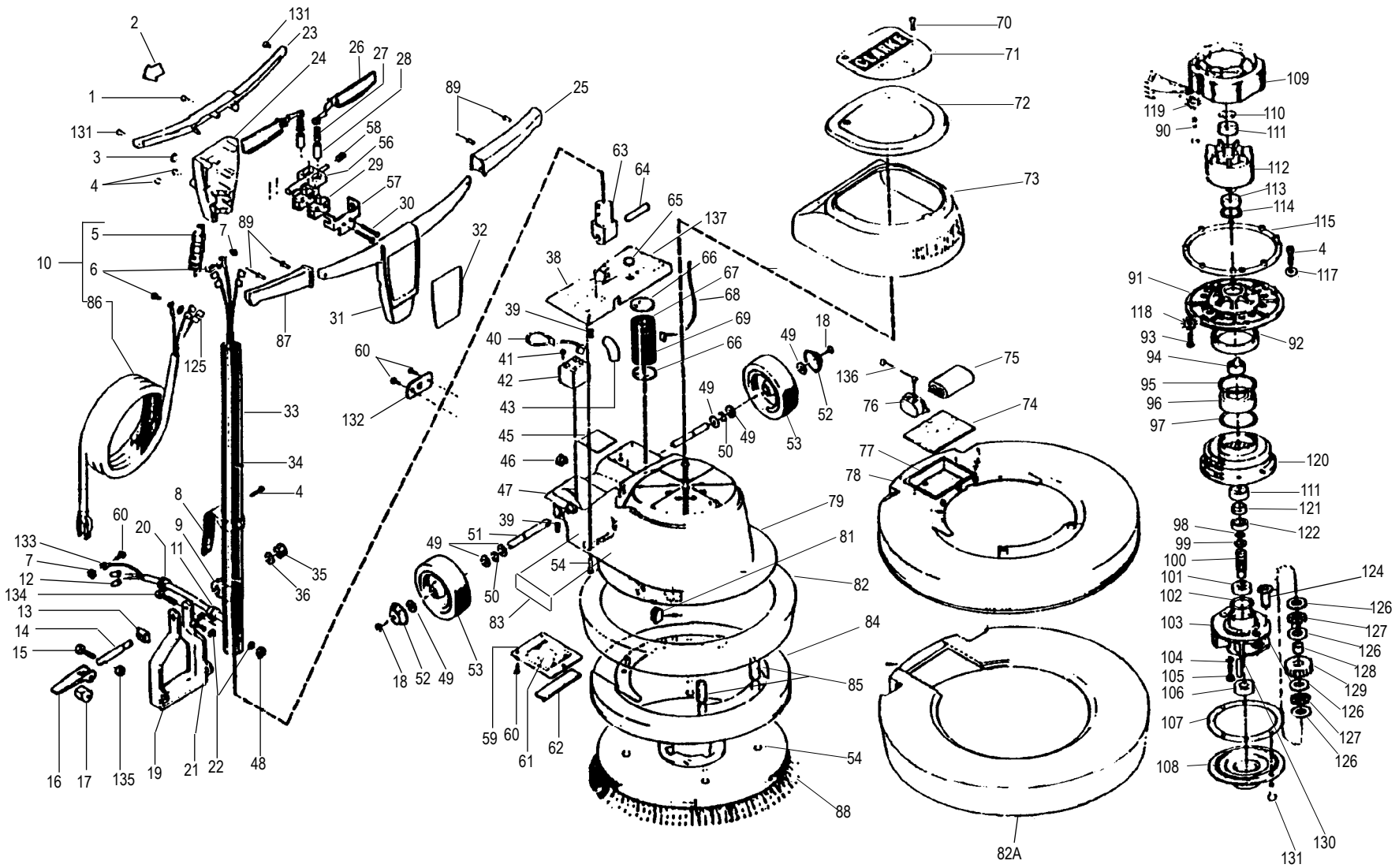


Clarke® Floor Maintainer
 Models 1500HD, 1700HD, 2000, 2300 Assembly Drawing



Clarke® Floor Maintainer
Models 1500HD, 1700HD, 2000, 2300
Assembly Parts List

Ref	Part No.	Description	Qty.
1	962391	Screw - 10-24 x 1 Soc Cap	1
2	445178	Label - Interlock	1
3	501302	Plug - Button	1
4	962289	Screw - 1/4-20 x 3/4	7
	962289	Screw-1/4-20 x 3/4 (FM-2300)	5
5	467504	Strain Relief	1
	497504	Strain Relief (FM-2300)	1
6	962015	Screw - 10-24 x 3/8 Pan Hd	2
7	980675	Washer-190ID x 4060D Ex Thd	3
8	504540	Hook - Cord	1
9	502040	Clamp - Handle Tube	1
10	908275	Cord Assm.-50 Ft.	1
	908279	Cord Assm.-50 Ft. (FM-2300)	1
11	627561	Strain Relief	1
12	911178	Connector - 120V	2
	911178	Connector - 230V	3
13	743850	Guide - Handle Lock	1
14	501346	Bolt - Cam Lock	1
15	960969	Screw - Shoulder 5/16 x 3/4 Lg.	1
16	503942	Handle - Cam Lock	1
17	508546	Stop - Clamp	1
18	962823	Screw - 1/4-20 x 1/2 Pn St Mach	2
19	500342	Arm - handle	1
20	857557	Strain Relief	1
21	85812A	Screw - 5/16 -18 x 7/8 Hx	1
22	980652	Washer -.319 x .586 x .078 St Lk	3
23	24507A	Housing - Handle & Switch	1
24	22109A	Cover-Switch Hsg	1
	22116A	Cover-Switch Hsg (FM 2300)	1
25	34612A	Grip-Handle, Left	1
26	505140	Lever - Switch	2
27	508340	Spring - Switch Lever	2
28	500241	Adapter - Switch	2
29	911690	Switch	2
30	84807A	Screw - 6-32 x 1 5/8 Pn St	2
31	24508A	Cover - Switch Front	1
32	70435A	Label, Switch HSG, FM-1500HD	1
	70436A	Label, Switch HSG,FM-1700HD	1
	70437A	Label, Switch HSG,FM-2000	1
	70438A	Label, Switch HSG,FM-2300	1
33	68318A	Tube - Handle	1
34	41925A	Cord - Interconnecting, Handle	1
35	980648	Washer-.17/32 ID x 1 1/16 OD PIn	1
36	920365	Nut -1/2-13 Nylock	1
38	22105A	Cover - Main Hsg.	1
39	962233	Screw - 1/4-20 x 5/16 St St	2
40	911736	Lead Asm - Capac/Relay	1
	911736	Lead Asm-Capac/Relay (FM-2300)	2
41	962606	Screw-6-32 x 3/8 Pn St Type	1
42	507572	Relay Mtr 1 hp	1
	507502	Relay-Mtr 3/4 hp-1 1/2 hp (FM-2300)	1
43	504740	Insulator - Elbow	1
44	930093	Rivet - 1/8 x 5/16	2
46	501142	Bushing	2
	501142	Bushing (FM-2300)	3
47	501141	Bushing - Link Arm	2
48	920110	Nut - 5/16 -18 Elas Stop	1
49	980215	Washer-Wheel Thrust	6
50	167308	Ring-Retaining	2

Ref	Part No.	Description	Qty.
51	507741	Shaft - Wheel	1
52	501540	Cap - Hub	2
53	59961A	Wheel Asm, Grey	2
54	962337	Screw - 1/4-20 x 1/2 Sc St Cap	9
56	38004A	Stop - Switch Interlock	1
57	61120A	Bracket - Stop Switch	1
58	67900A	Spring - Switch Lever	1
59	502342	Cover - Main Hsg., Bottom	1
	502345	Cover-Main Hsg. Bottom (FM-2300)	1
60	962826	Screw 10-24 x 3/8 Pn Hd	6
61	509806	Wiring Diagram	1
	509871	Wiring Diagram	1
62	502474	Cushion Capacitor	2
63	509240	Tongue - Handle Tube	1
64	506740	Pin-Handle Pivot	1
65	501345	Plug, Button	1
66	502403	Cushion Capacitor	2
67	502304	Cover, Capacitor	1
68	911737	Lead Asm., Capac/Line	1
69	502402	Capacitor	1
70	962727	Screw 8-32 x 1/2 Pn Typ T	3
71	70433A	Nameplate, Clarke	1
72	22106A	Cover, Drip	1
73	31237B	Bumper, Main Housing	1
74	502472	Cushion Capacitor, Bottom	1
75	502476	Capacitor, Run (FM-2300)	2
76	501371	Boot,Run,Capacitor(FM-2300)	2
77	502473	Cushion,Capacitor (FM-2300)	1
78	507871	Shield - (FM-2300)	1
79	24502C	Main Hsg.	1
	24503C	Main Housing (FM 2300)	1
81	506842	Plug, Hole	1
82	31233B	Bumper FM-1500HD	1
	31234B	Bumper FM-1700HD	1
	31235B	Bumper FM-2000	1
82A	31236B	Bumper FM-2300	1
83	70434A	Label, Div. of ALTO	1
84	507841	Shield FM-1500HD	1
	507851	Shield FM-1700HD	1
	507861	Shield FM-2000	1
85	508242	Spacer, Brush, Shield	2
86	907078	Cord 50 Ft. (w/o clips)	1
	90709A	Cord 50' (w/o clips) (FM 2300)	1
87	34613B	Grip Handle, Right	1
88	450914	Brush Asm., FM-1500HD	Ref
	460908	Brush Asm., FM-1700HD	Ref
	480916	Brush Asm., FM-2000	Ref
	490912	Brush Asm., FM-2300	Ref.
89	930108	Rivet 1/8 x 3/8 Red	4
90	85310B	Screw 10-24 x 2 Pn St	4
	85371A	Screw 1/4-20 x 2 3/4 Pn (FM-2300)	4
91	500240	Adapter, Gear Unit	1
92	507640	Seal	1
93	962892	Screw 1/4-20 x 3/4 Pn St.	8
	962716	Screw 1/4-20 x 1 1/2 Pn St.	10
94	502407	Coupling Drive	1
95	507302	Ring, Retaining	1
96	902609	Bearing	1

Parts List continued on page 26.

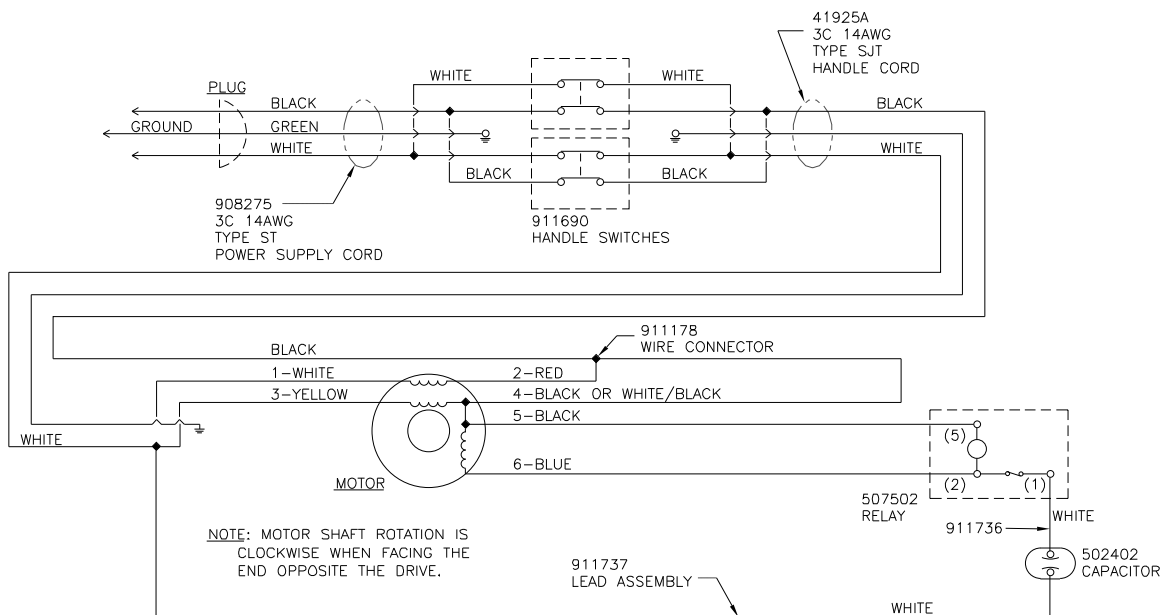
Clarke® Floor Maintainer
Models 1500HD, 1700HD, 2000, 2300
Assembly Parts List (Continued)

Ref	Part No.	Description	Qty.
97	507604	Seal, Ring, Gear O'Ring	1
98	507341	O'Ring	1
99	507340	Ring, Retaining	1
100	507740	Shaft, Pinion	1
101	902580	Bearing	1
102	507603	Seal, Idler, Hsg., O'Ring	1
103	504248	Housing, Idler, Gear	1
104	980685	Washer $\frac{5}{16}$ ID x $\frac{7}{16}$ OD	2
105	962841	Screw $\frac{5}{16}$ -18 x $1\frac{1}{4}$	2
106	902573	Bearing	1
107	503403	Gasket, Gear Unit	1
108	502303	Cover, Ring, Gear Hsg.	1
109	503173	Field 1 HP	1
	503174	Field $1\frac{1}{2}$ HP, (FM-2300)	1
110	318303	Spring, Load	1
111	902550	Bearing	2
112#	40658A	Field and Rotor Kit	1
	500472	Rotor $1\frac{1}{2}$ HP (FM-2300)	1
113	902654	Bearing	1
114	467328	Ring, Retaining	1
115	508271	Spacer, Gear Unit (FM-2300)	1
117	980657	Washer $\frac{1}{4}$ Lck., (FM-1500HD FM-1700HD, FM-2000)	2
118	980614	Washer, Shakproof #1114	8
119	980603	Washer, Shakeproof #1110	
120	504241	Housing, Ring Gear	1
121	508240	Spacer, Oil Seal	1
122	507641	Seal, Pinion	1
124	507743	Pin, Idler Gear	2
125	911389	Clip, Terminal	
126	980045	Washer, Thrust	8
127	902040	Bearing, Thrust	4
128	902048	Bearing, Idler, Needle	2
129	503541	Gear, Idler	2
130	925536	Pin $\frac{5}{16}$ x $1\frac{1}{4}$ Dowel	1
131	962241	Screw 10-24 x $\frac{1}{2}$ Sc St.	10
132	66636A	Plate, Strain, Relief	1
133	911933	Clip, Terminal	1
	911948	Clip, Terminal (FM-2300)	1
134	85817A	Screw $\frac{5}{16}$ -18 x $\frac{7}{8}$ Hx	1
135	920349	Nut $\frac{1}{4}$ -20 Elas. Stop	1
137	506359	Plate, Fire & Sanding	1
[]	911194	Lead Asm., White, (FM-2300)	2
[]#	56380639	Decal-Prop 65	1

[] = Not Shown

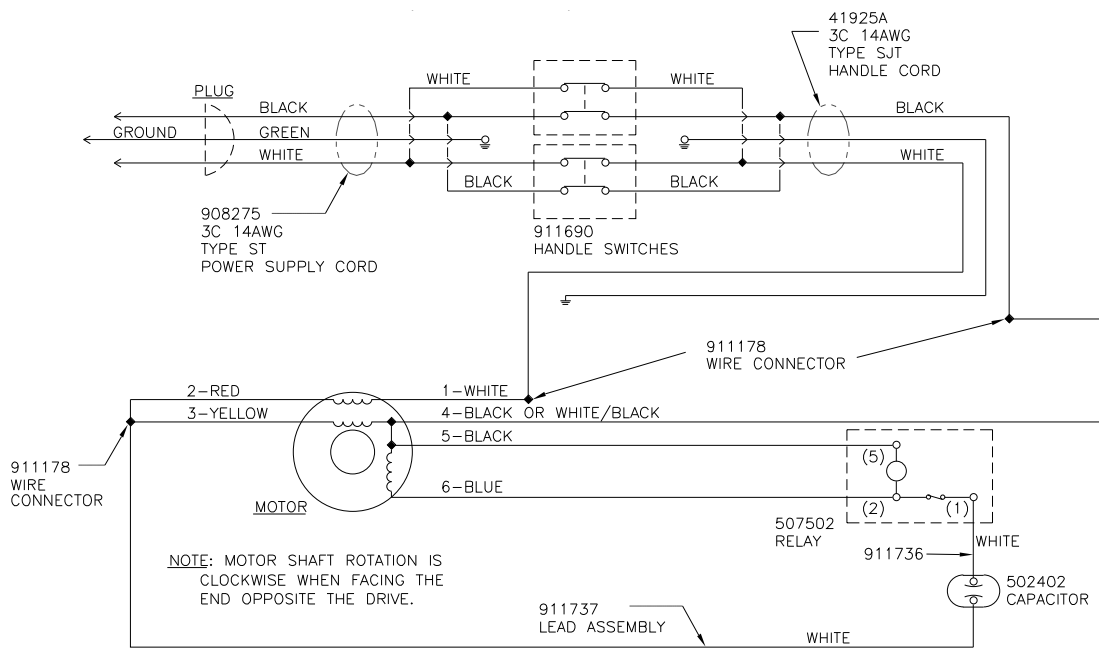
= Revised or new since last update

Clarke® Floor Maintainer
Wiring Diagram - 120V 50-60 Hz
FM 1500HD, FM 1700HD, FM 2000 4/01



Caution: Do not bend the push-on male terminal tabs on the switch.

Clarke® Floor Maintainer
Wiring Diagram - 230V 50-60 Hz
FM 1500HD, FM 1700HD, FM 2000 4/01



WARNING: Repairs by qualified personnel only.
AVERTISSEMENT: Reparations par personnel specialise seulement.
ADVERTENCIA: Unicamente personal calificado deberian hacer reparaciones.